

# FLSRV Newsletter



Winter  
2019

W  
I  
N  
T  
E  
R



Inside This Issue	Amazon Smile .....Page 1	Membership.....Page 1	All About Plants .....Page 3	Membership Form .....Page 7
	Valley Cleanup.....Page 1	Fred Meyers Rewards.....Page 2	Ice Skating in the Valley .....Page 3	Nisbet Walking Tour.....Page 8
	Annual Meeting.....Page 1	Maya Jewell Zeller.....Page 2	Water District.....Page 6	
	Volunteers Wanted .....Page 1	Year in Review.....Page 2	New Trail Section.....Page 6	

## Sign Up For Amazon Smile

Go to: smile.amazon.com and search for:  
Friends of the Little Spokane River Valley

Then, do your normal shopping on Amazon but use smile.amazon.com instead of amazon.com and 0.5% of purchase price on eligible products will be donated to FLSRV!

**No additional costs to you!**

## Valley Cleanup 2019

Michael Kennedy

Friends of the Little Spokane River Valley will hold their annual cleanup day for the valley on Saturday, April 27, 2019 at 9:30 AM. Due to the construction along Little Spokane RD this year we will meet at Pine River Park at 9:30 AM.

Our goal each year is to clean up most of the major roads in the valley from Wandermere to Perry; Shady Slope to the top of the hill; Dartford to Hazard Road; Hatch Road to the pool; and Golden Road, Midway, and Colbert Road including some new area along US 395.

Please mark your calendars for this year's cleanup. We need your time and continued support to help to keep our Valley clean. This is also a good way to get to know your neighbors. Remember meeting at Pine River Park this year !!!

After the cleanup, an annual chili feed will be held at Bart and Lindell Haggin's home for those who helped out. Thanks to all who help with both cleanup and the cooking!

## Annual Meeting and Dinner/Auction

Friday, February 22, 2019

Wandermere Gof Club

- Todd Dunfield, Community Conservation Manager, for Inland Northwest Land Conservancy will be our speaker.
- Detailed maps of the proposed new Trail from Midway to Colbert Road will be on display and a board member will be available to answer any questions you may have.
- Fund-raising KICK OFF for this new trail along Little Spokane Driver.
- Please make your reservations by returning the form at the bottom of the enclosed membership form.

If you have items you would like to contribute to the auction please call  
Harla Jean 951-2084

## Volunteers Wanted

Kirk Neumann

The Spokane County Conservation District is looking for volunteers living along the Little Spokane River to perform water quality testing. If you are interested please contact Dan Ross.

Office: (509) 535-7274 Ext. 229  
Email: dan-ross@sccd.org



## Membership

We have 110 member families for our organization, this is tops for the last few years. Among other things, membership dues are used for mailings of newsletters and we are expanding that coverage so more areas of our river valley can be aware of our activities.

Included in this newsletter is the MEMBERSHIP form for 2019. Please consider completing it and sending it along with \$25.00 for next year.

Your elected board members meet each month giving time and talent for the advancement of our projects. Please give them your support by renewing your membership.

Friends of Little Spokane River Valley, Inc.

## FLSRV Newsletter

is a publication of:

**Friends of Little Spokane River Valley, Inc.**

P.O. Box 18191  
Spokane, WA 99228  
Phone: 509-951-2084

For article suggestions or comments  
contact Harla Jean Biever

### Board of Directors

- Martha Schaefer, President
- Dave Maccini, Vice President
- Lindell Haggin, Secretary
- Harla Jean Biever, Treasurer
- Mark Case, Director
- Michael Kennedy, Director
- Kirk Neumann, Director
- Tina Wynecoop, Director
- Lance Pounder, Director
- Jack Bury, Director Emeritus

## Fred Meyers Community Rewards

Our organization is signed up for dollar rewards when you shop at Fred Meyers. Please consider joining up for this plan. It costs you nothing and does not affect your personal rewards. Online, navigate to:

fmcommunityrewards@fredmeyer.com

That will provide you with a sign-up form. Our group number is GG709. We are receiving around \$42.00 per quarter with a few of us signed up at this time. Great rewards with no effort.

## Maya Jewell Zeller

Tina Wynecoop



*“She believes she could breathe  
beneath the water...”*

Interesting people live in the Little Spokane River watershed. Always have. Over the years I have written articles for our newsletters about the river's indigenous residents, chiefs, early pioneers, water wheel builders, inventors, proprietors, dairy farmers, horse race course owners, fishermen, stewards of the land, pilots (who crashed), and so on.. It has been fun. Now, it is time to focus on the present, and if you haven't had the pleasure of reading her poetry and essays, or heard her interviewed on the radio, you must to meet neighbor Maya Jewell Zeller!

Allow me to introduce her: Two years ago she was invited to read her river-themed poetry at the annual dinner/fundraiser for Spokane Riverkeeper. The other invitees were: author/naturalist Jack Nisbet, and Spokesman Review columnist Shawn Vestal. They made an eloquent threesome. I knew then that I would write about Maya for our newsletter. She's our 'neighbor' and we are hers. Last November I heard her speak on Montana Public Radio's

program, The Write Question.\* She and editor/author Margot Kahn were interviewed about their new book, This Is The Place. It is a collection of thirty essays by women writing about home. After listening to the program I checked This Is The Place from our county library and turned straight to Maya's essay, "The Privilege Button." Meandering throughout her story are varied experiences of place that have defined "home" for her. She explores the manifestations of home influenced by the HOA covenants of her Fairwood II Home Owners' Association.

I contacted Maya hoping to interview her in person. As wife, parent of two young children, writer, gardener, editor, outdoorswoman, and Assistant Professor of English/Creative Writing at Central Washington University (she commutes) she has hardly time to squeeze in a meeting with me. We 'met' by phone and conversed through emails. She gave permission to choose one of her poems to share with friends in the Little Spokane River Valley:

### FALLING

Though it's gone down a little, that water at the bridge is still too brown for me to do any more than wade in. I did today, after twisting my ankle again. I could see just by the shore, where creatures skip and scuttle against the sand my toes sink into. Behind me the willow was saying something again, the grass too tired yet to be much more than green trying to overcome yellow. And beyond, out there, where the current ripped against itself like hair or the wet legs of a galloping horse, the river was dark, and reeked of the damp undersides of things.

Of course I thought of you, flat rock poised to fling like a small girl might from a giant's grip, drop from his cloud and plummet the way a grown woman trips on a trail.

She goes down hard from those hands.

You'd call me clumsy but we both know my body just wants to be closer to earth.

How evocative the poem's closing lines! Her writing can be described as having "intensity that draws us into participation...tells us what our blurred eyes, dulled ears miss. She doesn't tell us so much something we never knew but brings us into recognition what is latent, forgotten, overlooked..."

Her poetry dives beneath the surface and breathes of that glorious presence flowing through our lives and our landscape – the river.

## A "Walk" Through FLSRV's 2018 Activities

Tina Wynecoop

- Enlarged membership boundaries on each side of LSR from ½ to ¾ mile.
- Met with Barry Greene, Spokane County traffic planner to discuss adding a trail from Colbert Road to Midway Road.
- Discussed trails/roads in planning stages for "Village At Midway" and learned that road construction at Northside Aquatic Park will continue now that funding to complete the park has been received.
- Sent letter to WDFW supporting addition of their parcel to the Waikiki Springs natural area north of Mill Road.
- Invited David Schaub, Director of Inland Northwest Land Conservancy, to speak to our board about efforts to protect open space in the LSRV.
- Received approval to have a cross walk painted at Pine River Park enabling safe passage when crossing the road from the pedestrian trail to the park.
- Prepared annual budget for 2018.
- Pursued grants.
- Opposed proposed changes to low-density (LDRS) standards for county.
- Hiked with naturalist/historian/author Jack Nisbet at the confluence of Latah/Hangman Creek and the Spokane River. (Wonderful as usual.)
- Picked up litter along WSDOT's Children of the Sun Trail – from Wandermere Frontage Road to Highway 2 – four times.
- Reported finding a transient camp along Children of the Sun trail near Farwell Elementary.
- Celebrated expansion of Midway Elementary.
- Held annual meeting at Wandermere Golf Course in February. The dinner/guest speaker/silent auction fund-raiser were enjoyed.
- Cleaned litter in LSRV on Earth Day thanks to many hard-working volunteers.
- Expanded the mailing area for recipients of our newsletters.
- Attended/testified at the hearing before the "shooting advisory board" to address a neighbor's appeal to alter the boundaries of an established "no shooting area" so a local resident could operate a shooting range.
- Earned funds from Smile.Amazon shoppers who kindly designated our FLSRV non-profit as recipient.
- Survived disruption of Little Spokane Drive sewer project this fall. Patience and ingenuity required.
- Submitted detailed engineering design to Spokane County for the extension of non-motorized trail from Midway to Colbert roads.
- Received funding from Fred Meyer's non-profit program, thanks to shoppers who designated FLSRV as the recipient.
- Promoted our organization and its activities on the Nextdoor Neighbor app., reaching thirteen neighborhoods and over 2,000 subscribers.
- Bestowed the honorary title of 'Director Emeritus' on Jack Bury, our longtime board member who continues his support of FLSRV in an advisory capacity re: legal issues.
- Thanked all the generous donors of items for our silent auction.

## It's All About The Plants

As landowners along the Little Spokane River Valley, we have a unique opportunity to help maintain and improve the health of the river and our riparian areas. A riparian area is the area adjacent to a stream, lake, or wetland. Most healthy, natural riparian areas have moist, fertile soils that support many types of moisture loving plants. These plants provide food and shelter to numerous fish and wildlife.

Healthy riparian areas include a variety of types and ages of plants, including trees, shrubs, grasses, and ground covers. Plants adapted to local rainfall, climate, insects, and soil conditions tend to be easier to care for and have a better chance to survive than non-native plants. Plants that are removed or damaged in riparian areas can cause harm to the river from an increase in runoff and sediment.

A healthy riparian area has the following benefits:

- Provide wood to streams, creating fish habitat and slowing the stream current during and after storms.
- Shade the stream in the summer. Cool water is healthier for many native fish species.
- Help prevent erosion by holding soil in place with their roots.
- Filter out sediment laden runoff, keeping it from smothering fish habitat.
- Allow rain to soak into the soil instead of running into the stream.
- Helps filter out pollutants such as fertilizers, pesticides, and animal wastes.
- Provides important food sources, homes, shelter, and travel corridors for wildlife, fish, and other aquatic organisms.

The bottom line is we all need to protect our riparian areas to help prevent flooding and erosion. This will produce cleaner water and a healthy habitat for wildlife and fish.

Information provided from  
*A Landowner's Guide to Riparian Areas*

Oregon State University,  
University of Idaho and  
Washington State University

## Ice Skating in the Little Spokane River Valley

*Ty Brown*

Before Wandermere Golf Course was even in existence, the lake on the property was known for its winter pastime of ice skating. As far back as the late 1800s when Francis H. Cook owned the property and continuing through the ownership of Benjamin Laberee, the ice at Wandermere was a destination for wintertime recreation. Eventually with the purchase of the facility by Robert C. Ross and A. L. Doran, the soon to be Wandermere Golf Course, continued the traditions of the past. Ice skating was the first revenue generator of the business as the construction of the clubhouse was ongoing for the newly planned multi-sport activity center north of Spokane.

In the fall of 1930 ice skating was all the rage in the Spokane area, as well as nationwide. It was a different era, before other distractions, such as the television and the easy access to the automobile and other forms of recreation. People ventured outside year-round and what a better way to spend an afternoon or an evening than to ice skate in the great outdoors. Recreational skating was not hard to come by during this era. Most all major lakes and ponds in the Spokane vicinity froze



over, and before long the ice was filled with people of all ages. Liberty Lake,

Cannon Park, Manito Park, and Newman Lake were all popular destinations. As far back as the late 1800s, the residents of Spokane were enjoying the activity of ice skating. Liberty Park was one of the first city-run ice rinks that boasted an eight-acre pond to be used for winter recreation and according to the Spokesman-Review in 1889, "Properly cared for by the city, it will be a better skating pond than the young people of Spokane were ever able to get in this vicinity before. A pretty little rustic house will be erected near the lake and provided with a large fireplace. Here a caretaker will be in charge next winter, and the skaters come to do their skates or rest from their exertions."



*A clean sheet of ice was a must on the outdoor rinks of the day. With the fierce competition in the skating industry, operators had to keep their facility in great shape.  
(Courtesy of the Wandermere Collection)*

Around the area of the Little Spokane River, ice skating was not uncommon. At one point in the early 1930s, there were three outdoor rinks within a two-mile radius. Wandermere competed with Greenleaf Park (present Pine River Park) and Silas Cook's outdoor rink just to the north of the golf course property. All three of these facilities needed to stay ahead of the other in amenities and condition of the ice. Skating was a very competitive business to gain the

*- Ice Skating / Continued on page 4 -*

customers that hopefully returned for seasons to come. Night skating, music, the size of the rink and concessions were a big draw, and all three venues did their best to accommodate their clientele.

In September of 1930, with the purchase of the property on the Little Spokane River, the first order of business at Wandermere was to construct the clubhouse. To generate revenue during this time, Ross and Doran continued to operate the skating facility on the man-made lake. During the first winter of operation, skating was the main business. Advertisements in the local paper boasted Wandermere as the "finest rink in the Northwest." On New Year's Day of 1931 skaters could enjoy sandwiches, a heated clubhouse, and music as they twirled around the ice for an admission price of twenty-five cents, day or night. The Rose Bowl was even broadcast over the P.A. system so that people could listen to the Washington State Cougars play in the Rose Bowl game against the Alabama Crimson Tide.

house to change shoes and grab a light lunch before heading out to the activities slated for this winter sports extravaganza. The list of events included races from a quarter mile for kids up to twelve and a mile race for kids fourteen to eighteen years old. Adults could participate in the open mile race for men and the open half-mile for women. "Fancy" skating exhibitions and a barrel jumping contest rounded out the day's activities. Judges for all the races were W. J. Kommers, chairman of the Spokane Figure Skating Club, John T. Little, owner of a prominent sporting goods store in town, and businessman, Claude LaLone. After the

The Christmas day carnival was such a success that the crew at Wandermere repeated the activities on New Year's Day. This time high school team relay races were added to the program, with a silver trophy cup donated by Bill Hatch Sporting



Most of the folks that ventured out to Wandermere were interested in just skating around the ice. Many came out to the rink on dates and with friends to enjoy the great outdoors. On a beautiful winter may upwards of 500 people were on the ice.

(Courtesy of the Wandermere Collection)

Goods as the grand prize or the winners. Listed on the carnival program were prizes including skating socks, candy, cigars, New Year's dinner tickets, and other awards.

Winter recreation on Wandermere Lake continued into the 1970s when the activity seemed to fade away from interest. Occasional snowmobile races and hockey practices by the Spokane Comets, Spokane Jets and, other winter activities dotted the calendar over the years, but the frozen pond at Wandermere had seen its heyday.

Coupled with the increased liability and the competition with other activities, the business of skating ceased. Although ice skating is still a popular attraction in Spokane, the lakes and ponds around the area gradually prohibited public skating, and the interest turned to indoor rinks and modern refrigerated facilities.

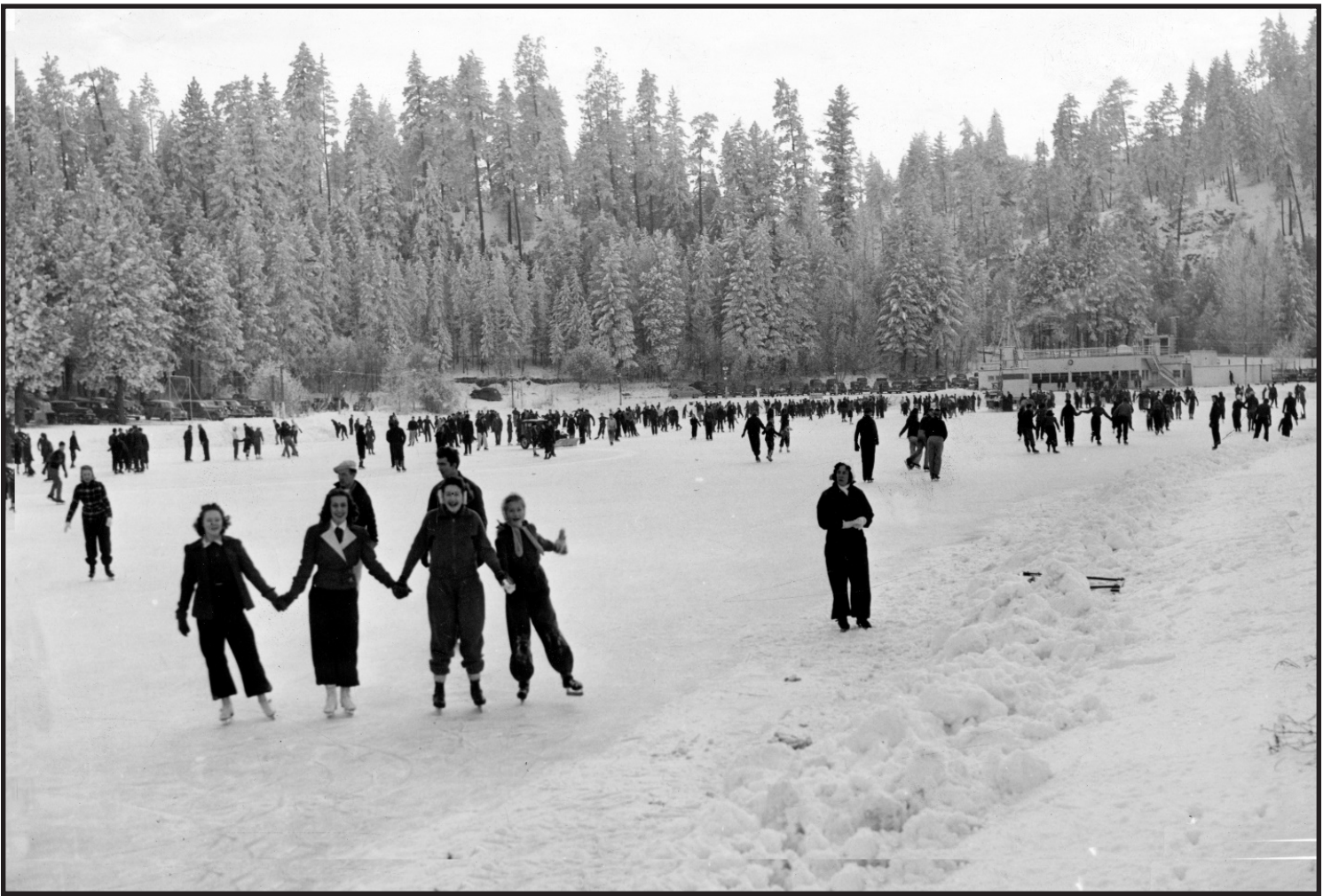


Barrel jumping was the marquee event at the Winter Carnival at Wandermere on Christmas Day of 1931. This old sport provided laughs and thrills with Ben Dech and "Babe" Grimm soaring over a string of six barrels to tie for first in the feature event.

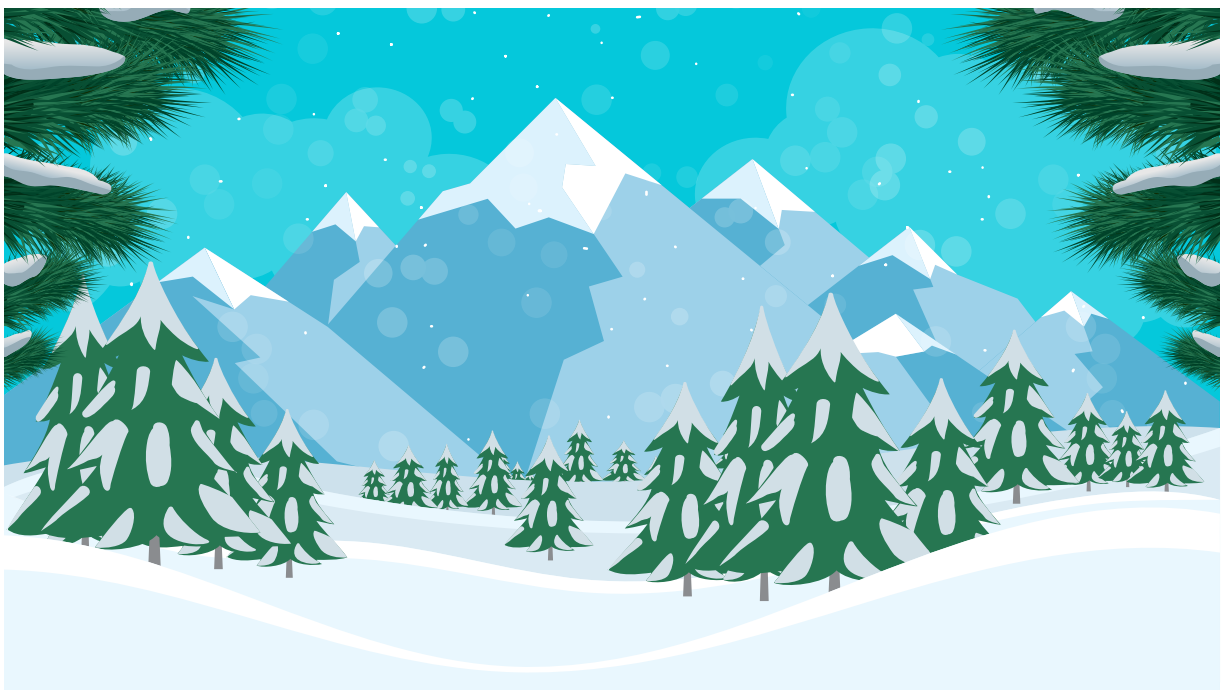
(Courtesy of the Wandermere Collection)

On Christmas day of 1931, Wandermere hosted a winter carnival that brought multiple events to the ice. Skaters were able to use the club-

house's events, spectators and participants were encouraged to gather at the clubhouse to enjoy the fireplace while listening to music on the radio.



The Spokesman-Review ran this photo in the January 22, 1941 paper showing a fun-filled day and a rink filled with skaters.  
(Courtesy of the Wandermere Collection)



# Whitworth Water District 2019 Update

*Matt Wright, PE, District Superintendent*

Whitworth Water District is excited to announce that they have selected Matt Wright as the new District Superintendent. Matt started in his new position with the District on September 4, 2018 and is training with the District's current Superintendent, Doug Babin, who will be retiring in the next couple years. Doug has been employed with the District since 1978. Tom Davis, Operations and Maintenance Supervisor retired on December 31, 2018. Tom had been with the district since 1979.

The new District Office located at 17401 N. Newport Road is nearing completion and we plan to move into the new facility in February of 2019. This project has been in the works for over 20 years and allows the district to consolidate district operations into a single facility. The District Office has been in the current location on Waikiki Road since 1968.

The district's 10-year Water System Plan has recently been approved by the Department of Health and includes a 10-year

Capital Improvement Plan that proposes significant infrastructure improvements through 2027. Included are new distribution and transmission system piping, as well as new source and storage projects that will provide additional system redundancy and ensure capacity for future development. No new wells are proposed within the Little Spokane Aquifer. In early 2019, a new production well will be developed in the Spokane Valley Rathdrum Prairie Aquifer near the existing production well on Mayfair Road. A transmission main project in Mill Road will follow later this year, connecting this new well into northern areas of the district. Site investigation and geotechnical testing is currently being conducted on a property off Hatch Road for a new reservoir north of the existing Hatch Reservoir.

Water Quality Testing has been ongoing each month per state and federal regulations with great results. Of the more than 400 water samples collected from 35 sampling sites in 2018, zero positive test results for acute contaminants of coliforms and nitrates were recorded. Drinking water produced from the Whitworth Water's various well sites is still pristine with no indications of contamination.



## **DONATION ENVELOPE ENCLOSED**

### **NEW TRAIL SECTION: MIDWAY RD. TO COLBERT RD.**

Please consider contributing money to the construction of a trail along Little Spokane Drive that will connect the trail that now ends at Midway Road north to a segment on Colbert Road.

Mark Case, a FLSRV board member, has spent hours of volunteer time producing maps that detail this proposed construction and then submitting them to Spokane County for a permit. Other board members, Kirk Neumann, Michael Kennedy and Dave Maccini along with FLSRV member, Greg Heline, have also given hours to assist Mark in this project.

You could use this envelope to return registration and money for the following:

- **TRAIL DONATION**
- **2019 MEMBERSHIP**
- **FEB. 22 ANNUAL DINNER**
- **NISBET WALKING TOUR**

# Friends of the Little Spokane River Valley, Inc. 2019 Association Membership Form

### Goals of the organization:

- ⇒ Preserve and sustain the unique character of the Little Spokane River Valley, including its open space and natural setting, maintaining lower density zoning.
- ⇒ Protect the areas ecosystem including water quality, wetlands, priority habitat and wildlife, and dwindling native vegetation.
- ⇒ Encourage the development of area parks.
- ⇒ Educate public officials of FLSRV concerns, being pro-active when major issues are at the forefront.

Property owners in the area *3/4 mile either side of the Little Spokane River from Chattaroy to Dartford, then 1/2 mile either side of the Little Spokane River from Dartford to the Fish Hatchery* are invited to become members. Each membership may include two members of one family. Individuals who live outside the designated area, or any organization, may join as an Associate (non-voting) member.

**Being in agreement with the goals, I wish to join FLSRV.** Signature \_\_\_\_\_

Name (or Organization): \_\_\_\_\_

Address: \_\_\_\_\_

City: \_\_\_\_\_ State: \_\_\_\_\_ Zip Code: \_\_\_\_\_

Home telephone: \_\_\_\_\_ E-Mail/FAX: \_\_\_\_\_

What are your special concerns about the valley?

What issues or topics would you like discussed at meetings?

<p><b>Check if you are interested in helping with:</b></p> <p><input type="checkbox"/> Trails Committee</p> <p><input type="checkbox"/> Parks Committee</p> <p><input type="checkbox"/> Newsletter (writing &amp;/or publishing)</p> <p><input type="checkbox"/> Sign Design or construction</p> <p><input type="checkbox"/> Board member</p> <p><input type="checkbox"/> Administrative help</p> <p><input type="checkbox"/> Other _____</p>	<p><b>2019 FLSRV membership dues:</b></p> <p><b>Full Membership</b>                      <b>\$25.00</b></p> <p>(Associate member \$15)              \$ _____</p> <p><b>General Fund</b>                              \$ _____</p> <p><b>Trail Fund Contribution</b>              \$ _____</p> <p><b>Welcome Sign (future)</b>              \$ _____</p> <p><b><u>TOTAL PAID:</u></b>                              \$ _____</p>
---	--

Friends of Little Spokane River Valley, Inc. is an IRS Section 501(c)(3) tax-exempt non-profit corporation (a charity). Dues and donations are tax exempt to the full extent of the law. You should check with your tax consultant to be sure this applies to you.

Make checks payable to: **Friends of Little Spokane River Valley**  
Mail to: **Harla Jean Biever, 2220 E. Colbert Rd., Colbert, WA 99005**

<b>FLSRV Dinner Reservation</b>		Friday, February 22, 2019, Doors Open 5:30pm, Meeting 6:30pm, Dinner 7:00pm <b>Wandermere Golf Course Clubhouse</b>	
# Tickets requested <b>(\$20.00 Each)</b>	Name(s):		
Amount enclosed: \$	Street:	City:	Zip:
Make checks payable to <b>FLSRV</b> . Donations may be tax deductible.			Phone:
Send to: <b>Harla Jean Biever</b> 2220 E. Colbert Rd. Colbert, WA 99005		<b>Pick up your tickets at the door.</b>	



Friends of  
 Little Spokane River Valley, Inc.  
 P.O. Box 18191  
 Spokane, WA 99228



**Jack Nisbet's and FLSRV's Sev-  
 enth Annual Walking Tour**  
 Telford Recreation Area  
 Sunday, April 28, 2019  
 9:00am-noon

Meet at WA DOT rest area on State Hwy 2. (13 miles west of Davenport; see map of area at [https://www.blm.gov/or/resources/recreation/files/brochures/Telford\\_2010.pdf](https://www.blm.gov/or/resources/recreation/files/brochures/Telford_2010.pdf))

Come explore the human and natural history of the BLM's Telford Recreation Area. The Telford tracts contain some of the most extensive and varied shrub-steppe in the region, including a spectacular display of early wildflowers.

The terrain is rocky and gently rolling. Bring good hiking boots, sun screen, water, and snacks.

Please complete the registration form at right, and detach. Send it along with a

check made out to FLSRV with your payment of \$25.00 per person by April 10, 2019.

MAIL TO

Harla Jean Biever, 2220 E. Colbert Rd.  
 Colbert, WA 99005

Name(s) \_\_\_\_\_

Address: \_\_\_\_\_

City \_\_\_\_\_

State \_\_\_\_\_ Zip \_\_\_\_\_

Phone \_\_\_\_\_

Email \_\_\_\_\_

Number of Persons \_\_\_\_\_ @ \$25.00 each

Check Enclosed \$ \_\_\_\_\_



**FLSRV Website**

Have you visited our web site? We are continually updating information in which you might be interested. Take a look at [flsrv.org](http://flsrv.org).